

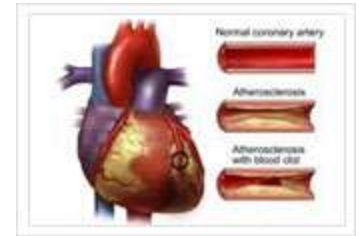


Coronary Angioplasty



Coronary Angioplasty

Angioplasty physically opens the channel of diseased arterial segments (see below), relieves the recurrence of chest pain, increases the quality of life and reduces other complications of the disease. Since it is performed through a little needle hole in the groin (or sometimes the arm) it is much less invasive than surgery and can be repeated more often should the patient develop disease in the same, or another, artery in the future



RISKS:

- Allergic reaction to the x-ray dye
- Bleeding in area where the catheter was inserted
- Blockage of blood flow to an area of the heart (very rare).
- Reduce the risk of death in some patients
- Damage to a heart valve or blood vessel
- Bleeding
- Infection

COMPLICATION

- Reaction to contrast dye
- Kidney problems
- Damage to the lining of the artery (called dissection)
- Reduce the risk of death in some patients
- Blockages developing in arteries downstream from the treated artery from particles of the plaque breaking free (called embolization).